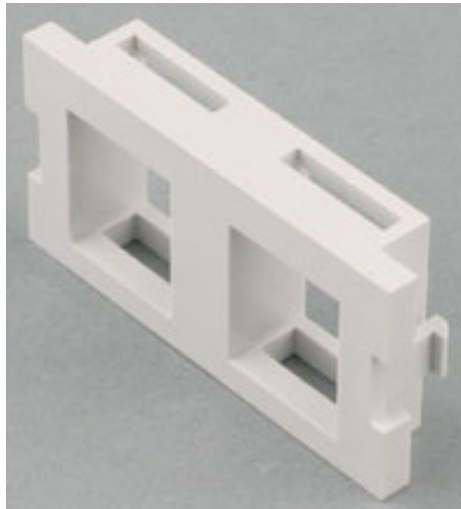




Snap-In Module for Flush Mount Wall Plate and Surface Mount Box

The "Snap-in Module" offer flexibility and wide selection for the most complicated multimedia station requirements. Snap-in modules include RJ-45 keystone jack, BNC, F, RCA and ST, SC, MT-RJ, mini DIN etc. for flush mount wall plates and surface mount boxes. Module comes in three heights - 1/2" blank, 1" flat and 1-1/2" angled.

Blank modules are available to allow future expansion.



Model: ISFU2-00WH00N

Description: 1" Blank module with two snap-in hole

Features:

- 1/2" blank, 1" flat modules and 1-1/2" height 45 degree angled modules.
- Series II wall plate opening can accommodate three 1" flat or two 1-1/2" angled module.
- Surface mount boxes can accommodate only 1" flat module.
- Use 1/2" blank module as spacer when opening uses one 1" and one 1-1/2" modules.